


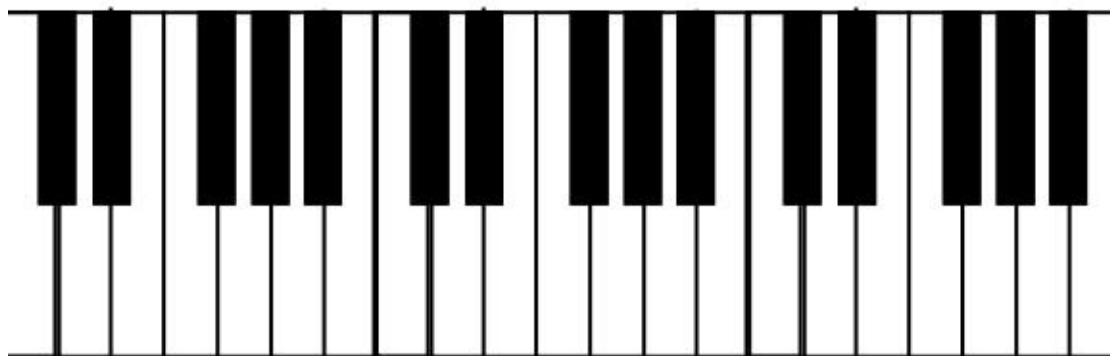
Music lesson with LEGO robots

You have one spring thematic song.

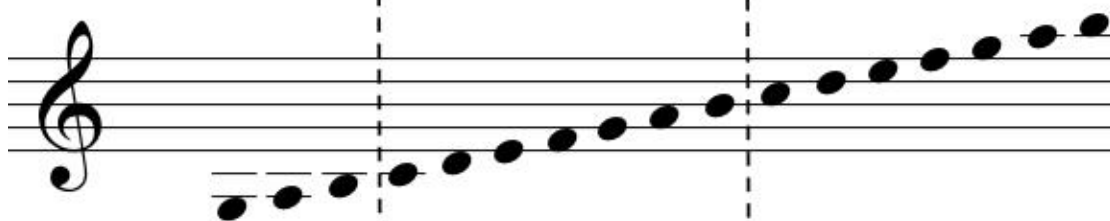
1. Share the note cards to both partners.
2. Write corresponding letter to every note on the note card. (If you need use additional material on the other side.)
3. For every note write it`s duration. (If you need use additional material on the other side.)
4. All the note cards have a serial number, according to them create a program, that plays the given song. (You have already put the first note correctly with the instructor.)
5. To add a new note to the program, pick up the block from the blue tab (If you need use additional material on the other side) and drag it after the last active block. (Note, that all the active blocks are bright coloured.)
6. Insert the corresponding letter for the note in the first gap, use CAPITAL LETTERS.
7. Insert the note`s lenght in the second gap.
8. Repeat the steps 5-7, until all the snippets are typed in in the right order.



9. Press the  button , to play the song on the robot. Does it sounds familiar? Is the melody right? If not, change the program.



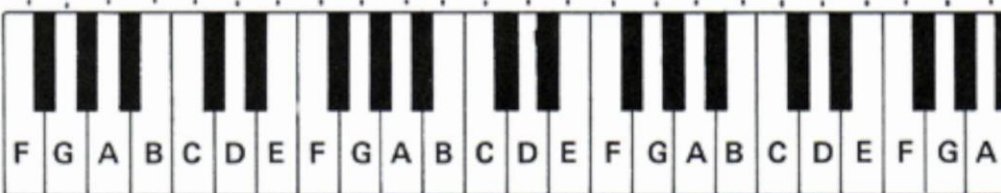
g a b c₁ d₁ e₁ f₁ g₁ a₁ b₁ c₂ d₂ e₂ f₂ g₂ a₂ b₂



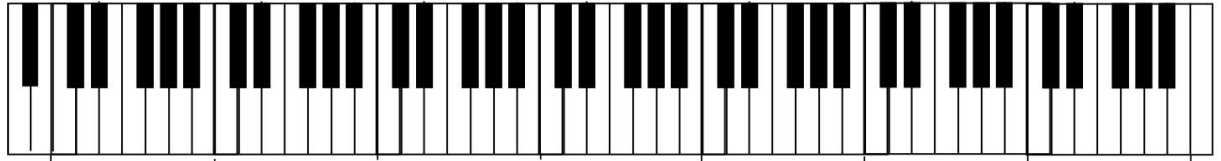
Väike oktaav

I oktaav

II oktaav



↑
MIDDLE
C



A₂ B₂ C₁ D₁ E₁ F₁ G₁ A₁ B₁ C D E F G A B c d e f g a b c₁ d₁ e₁ f₁ g₁ a₁ b₁ c₂ d₂ e₂ f₂ g₂ a₂ b₂ c₃ d₃ e₃ f₃ g₃ a₃ b₃ c₄ d₄ e₄ f₄ g₄ a₄ b₄ c₅

Sub-kontra-oktaav

Kontraoktaav Suur oktaav Väike oktaav I oktaav II oktaav III oktaav IV oktaav V

8vb